

# OnTheMove

The Monthly Newsletter from the Berard Team

March  
2024



## In This Issue:

- ▶ Trans-load Times 2 | The Manifold Project
- ▶ On The Road | Sump Section Transport
- ▶ Happy Retirement Keith Daigle!

**BERARD**  
SINCE  
1945

The Mega Transport Experts

# Trans-load Times 2 The Manifold Project



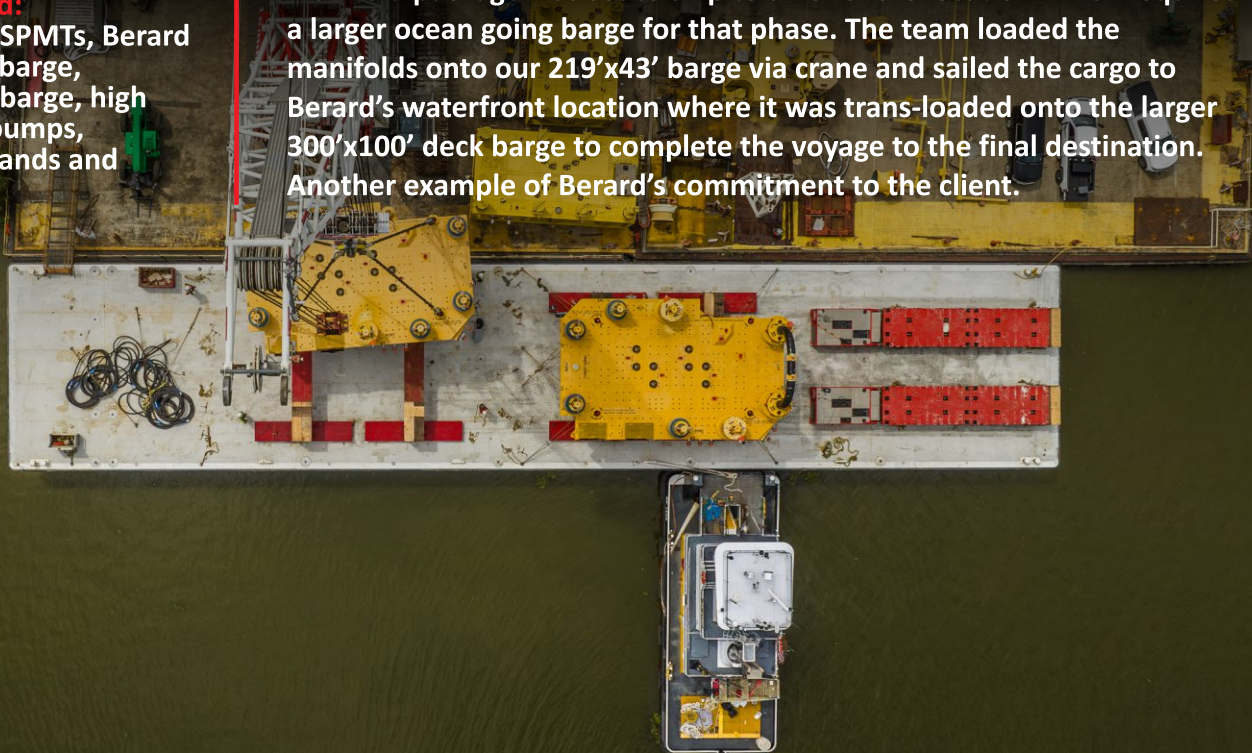
## Job Specs

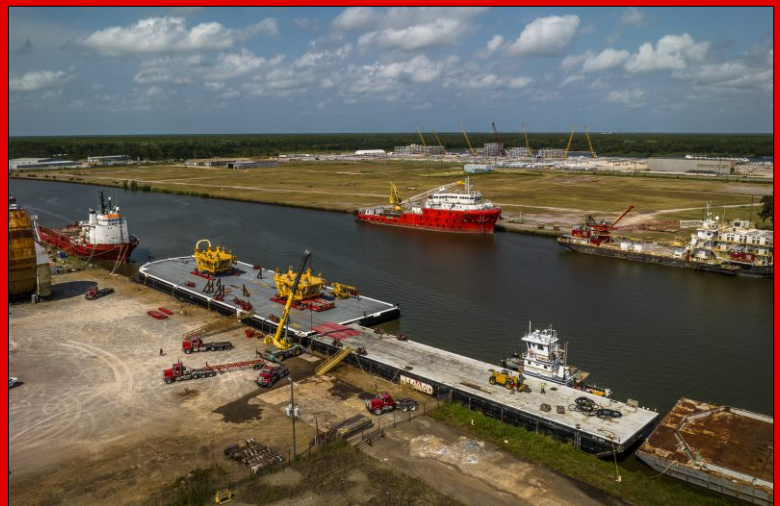
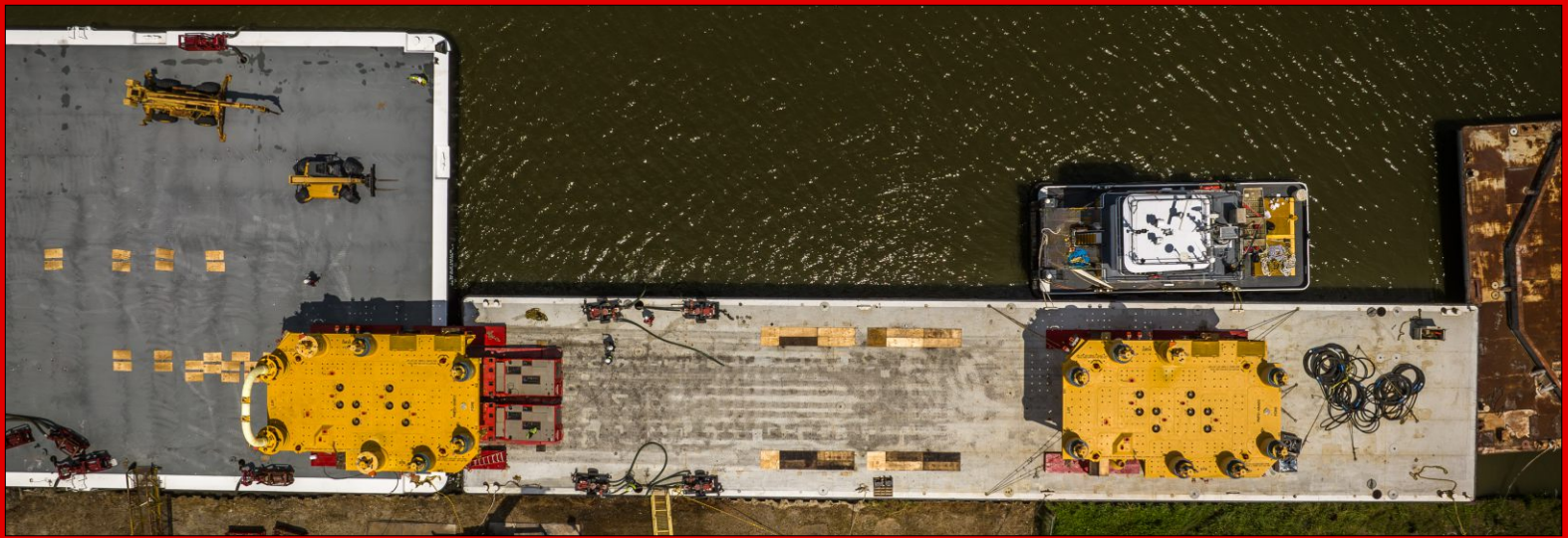
**Weight:** 379,200 & 397,000 lbs

**Dimensions:**  
43'L x 30'W x 26'H  
43'L x 30'W x 32'H

**Equipment Used:**  
16 axle lines of SPMTs, Berard  
219' x 43' deck barge,  
300'x100' deck barge, high  
volume water pumps,  
barge ramps, stands and  
beams

The Berard team provided a local client with a turnkey transport solution for a manifold package shipping from their South Louisiana facility. The client's facility is located along a waterway with a lock system downstream with a restricted width for marine traffic. Berard custom designed our own deck barge to navigate this particular lock system so our client's finished products could be shipped out. This particular manifold package was set to ship to an offshore location which required a larger ocean going barge for that phase. The team loaded the manifolds onto our 219'x43' barge via crane and sailed the cargo to Berard's waterfront location where it was trans-loaded onto the larger 300'x100' deck barge to complete the voyage to the final destination. Another example of Berard's commitment to the client.





# On The Road Sump Section Transport



## Job Specs

### Weight:

Up To 220,000 lbs.

### Dimensions:

Various up to 18' H

### Equipment Used:

Goldhofer THP/SL trailer,  
Faymonville 9 axle and Highway  
Max trailers, 10 axle Goldhofer  
PST-SLE transporter, prime  
movers and escort vehicles

Recently the Berard team was tasked with finding a way to move numerous concrete sump sections from a Baton Rouge fabricator to a barge on the Mississippi River for final delivery to the project site. After locating a suitable truck to barge transfer site, Berard transport engineers worked along with Louisiana DOTD to find a feasible route through the streets of Louisiana's Capitol City. Using a Goldhofer THP/SL trailer and Faymonville 9 axle HighwayMAX trailers, the Berard team safely delivered modules weighing up to 220,000 pounds with a transport height up to 18 feet. Once at the waterfront dock, Berard used a 10 axle Goldhofer PST-SLE transporter to shuttle modules to the floating crane.





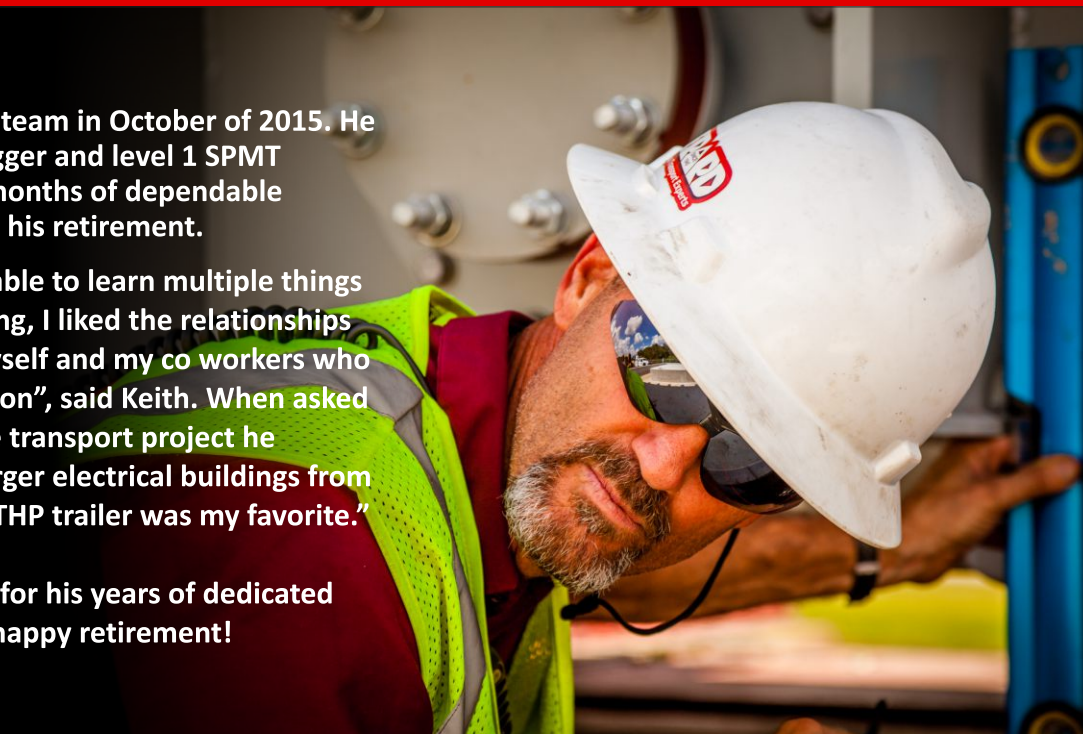
# Happy Retirement Keith Daigle!



Keith Daigle joined the Berard team in October of 2015. He served the team as a driver, rigger and level 1 SPMT operator. After 8 years and 4 months of dependable service, Keith is ready to enjoy his retirement.

"I've liked the fact that I was able to learn multiple things along the line apart from driving, I liked the relationships that were formed between myself and my co workers who all had the same goal in common", said Keith. When asked what was his most memorable transport project he replied, "hauling one of the larger electrical buildings from Houston to Orla, Texas with a THP trailer was my favorite."

All of us at Berard thank Keith for his years of dedicated service and we all wish him a happy retirement!



# Happy Birthday!

## Happy Birthday to These Dedicated Team Members!

Baron Berard  
Kevin Beinvenu  
Dillon Bouchereau  
Ray Breaux  
Spencer Freyau

Vicki Pellerin  
Kelsey Pelous  
Sloane Simoneaux  
Joel Thibodeaux  
Karl Vann